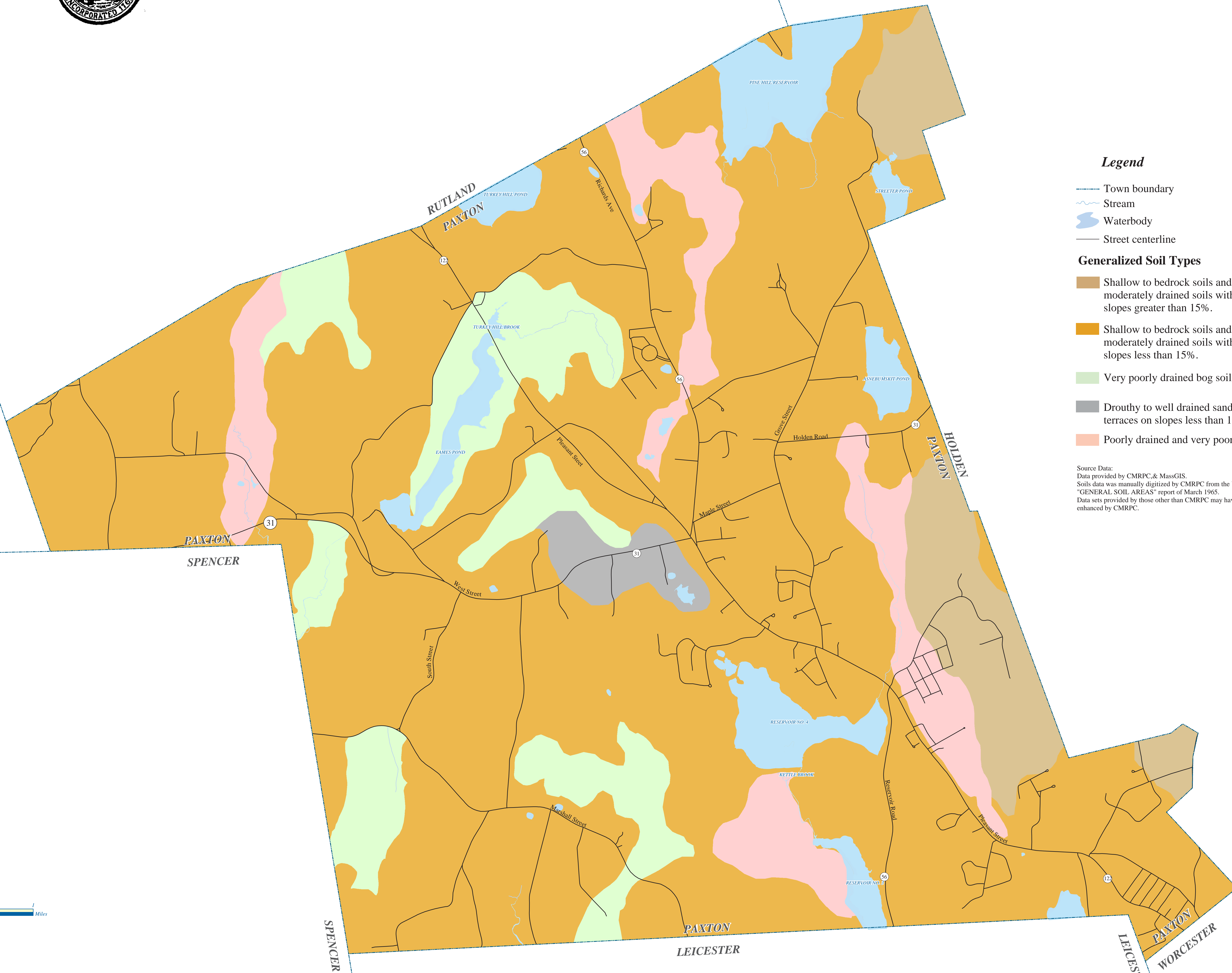
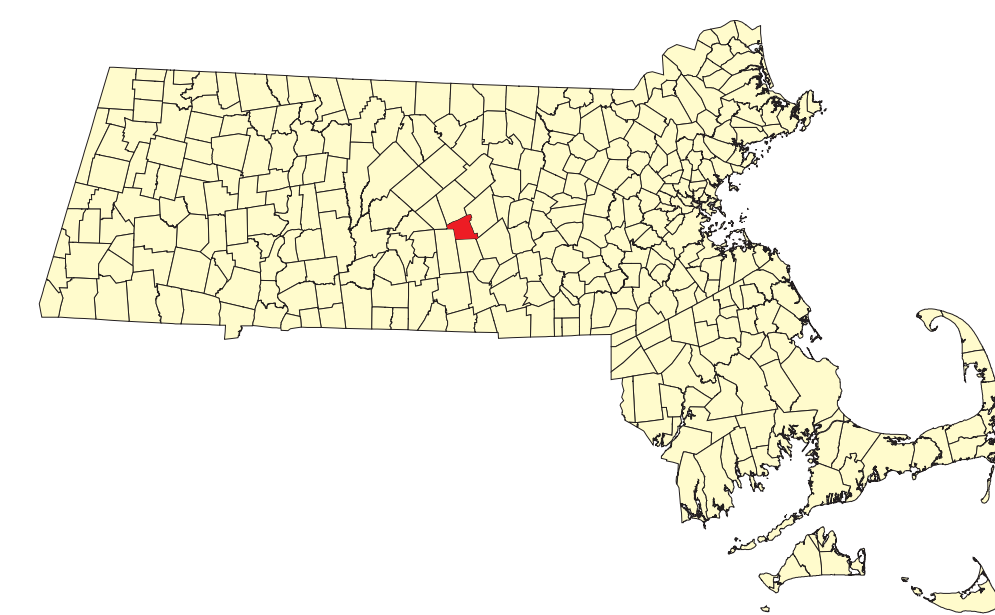


TOWN OF PAXTON

Soils & Unique Geologic Features Map



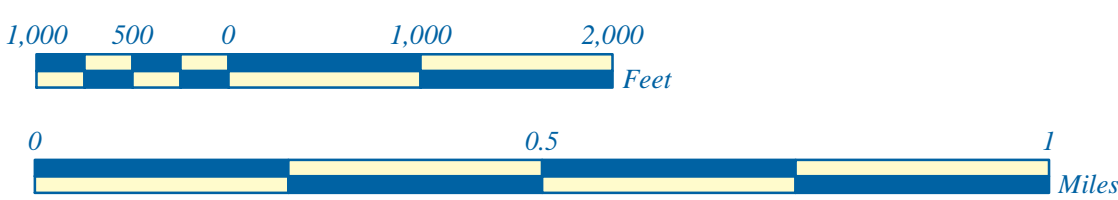
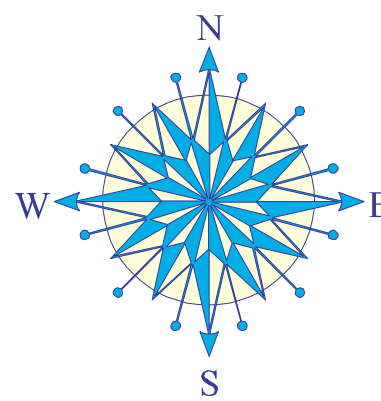
Legend

- Town boundary
- Stream
- Waterbody
- Street centerline

Generalized Soil Types

- Shallow to bedrock soils and deep, well drained and moderately drained soils with hardpans on upland slopes greater than 15%.
- Shallow to bedrock soils and deep, well drained and moderately drained soils with hardpans on upland slopes less than 15%.
- Very poorly drained bog soils.
- Drouthy to well drained sandy and gravelly soils on terraces on slopes less than 15%.
- Poorly drained and very poorly drained mineral soils.

Source Data:
Data provided by CMRPC & MassGIS.
Soils data was manually digitized by CMRPC from the USDA & SCS
"GENERAL SOIL AREAS" report of March 1965.
Data sets provided by those other than CMRPC may have been
enhanced by CMRPC.



The information depicted on this map is for planning purposes only.
This information is not adequate for legal boundary definition,
regulatory interpretation, or parcel-level analysis. Use caution
interpreting positional accuracy.

Produced by the GIS Center at
Central Massachusetts Regional Planning Commission,
35 Harvard Street, Second Floor, Worcester, MA 01609-2801

