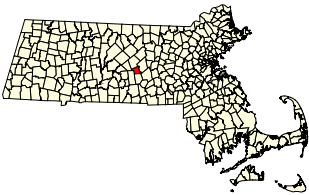


TOWN OF PAXTON



LAND USE MAP

The information depicted on this map is for planning purposes only.
This information is not adequate for legal boundary definition, regulatory interpretation, or parcel-level analysis.
Produced by the Central Massachusetts Regional Planning Commission GIS Center.
35 Harvard Street, Second Floor, Worcester, MA 01609-2891



Legend

- Towns
- Zoning
 - R-1
- Developed Land as of 1985
- Land Use Update
- Miscellaneous Undevelopable Lands
- Subdivisions since 1991
- Slopes greater than 25 %
- Open Space
 - Municipal Ownership
 - Permanently Protected
- Hydrography
 - Floodplain
 - Stream
 - Intermittent Stream
 - Water Bodies
 - 100' River Protection Act Buffer
 - 200' Cohen Bill Protection Buffer
- Roads
 - Local
 - Collector

0 1000 2000 Feet



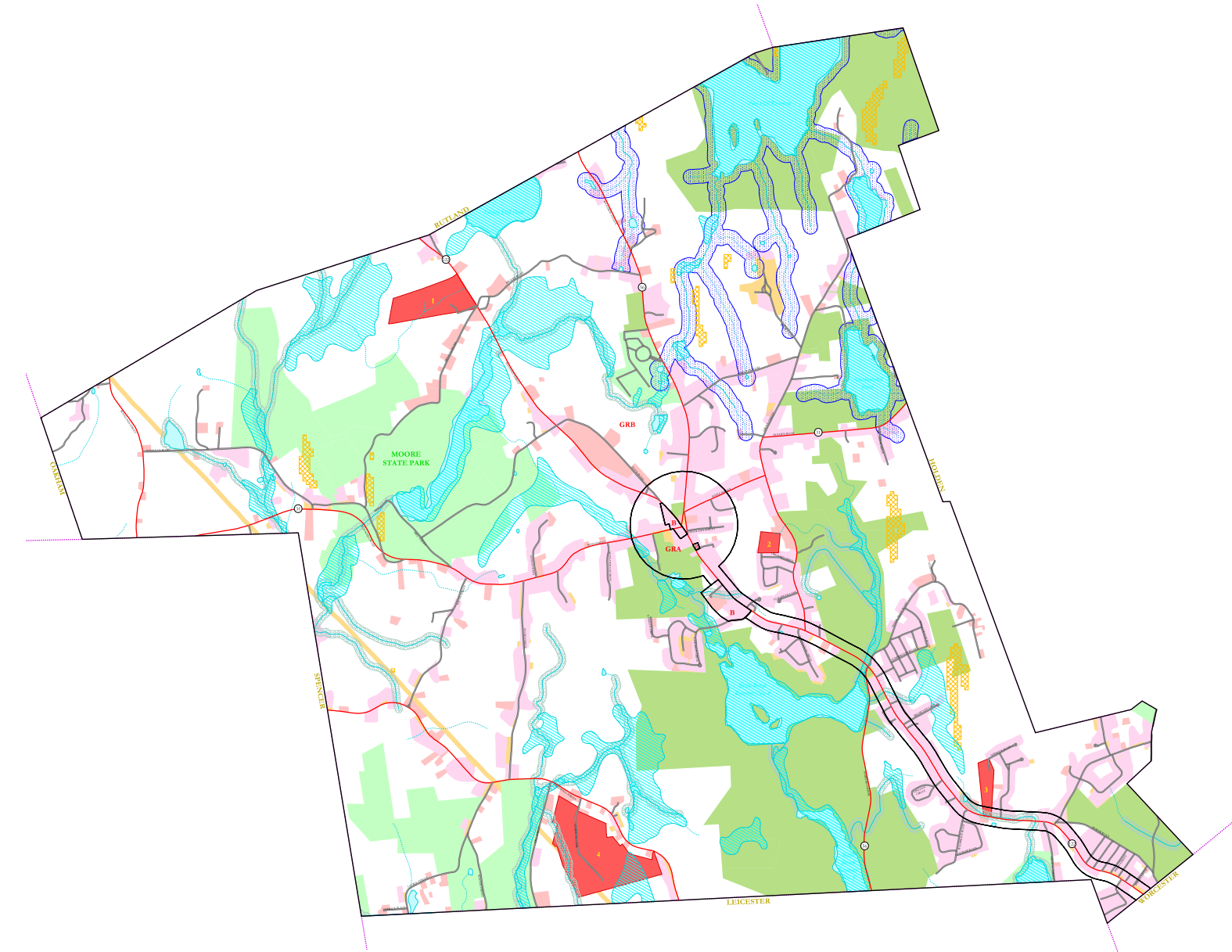
Zoning District Description

Zonecode	District	Percentage
GRA	General Residence A	3.30
GRB	General Residence B	96.40
B	Business	0.30



Source data:
New land use and miscellaneous undevelopable lands were developed by CMRPC.
Subdivisions and zoning districts were developed by CMRPC and the Town of Paxton.
Open space developed by CMRPC, the Town of Paxton, MassGIS, and other state agencies.
MassGIS 1:25,000 hydrography was derived from USGS Digital Line Graph files.
Cohen Bill protection was developed by the Metropolitan District Commission.
River Protection Act buffers were developed by CMRPC and MassGIS.
All other data are from MassGIS.

Map was originally produced as part of the Build-Out Series - October 2000



Subdivisions Approved or Built Since 1991

ID	Name	Year Approved	Acres	Approved Lots	Built Lots
1	Brigham Hill Estates	1998	55.0	10	10
2	Forestdale Road	1998	6.5	3	0
3	Muir's Farm	1996	10.2	6	4
4	Paxton Ponds	1998	98.9	38	38