



# RICHARDS MEMORIAL LIBRARY

Created by

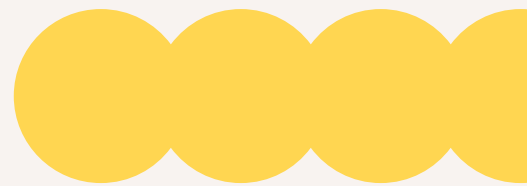
Pam Chenevert

Library Director

Masters of Science in Library Science

Certificate of Librarianship, MBLC

2/8/2023





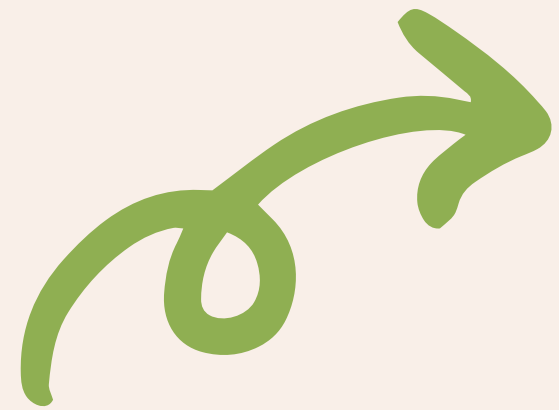
# Table of Contents

Static URL:

[https://www.canva.com/design/DAFaA2cq554/hpzV2UKPRohtBpsrOS\\_M5w/view?](https://www.canva.com/design/DAFaA2cq554/hpzV2UKPRohtBpsrOS_M5w/view?)

[utm\\_content=DAFaA2cq554&utm\\_campaign=designshare&utm\\_medium=link2&utm\\_source=sharebutton](https://www.canva.com/design/DAFaA2cq554/hpzV2UKPRohtBpsrOS_M5w/view?utm_content=DAFaA2cq554&utm_campaign=designshare&utm_medium=link2&utm_source=sharebutton)

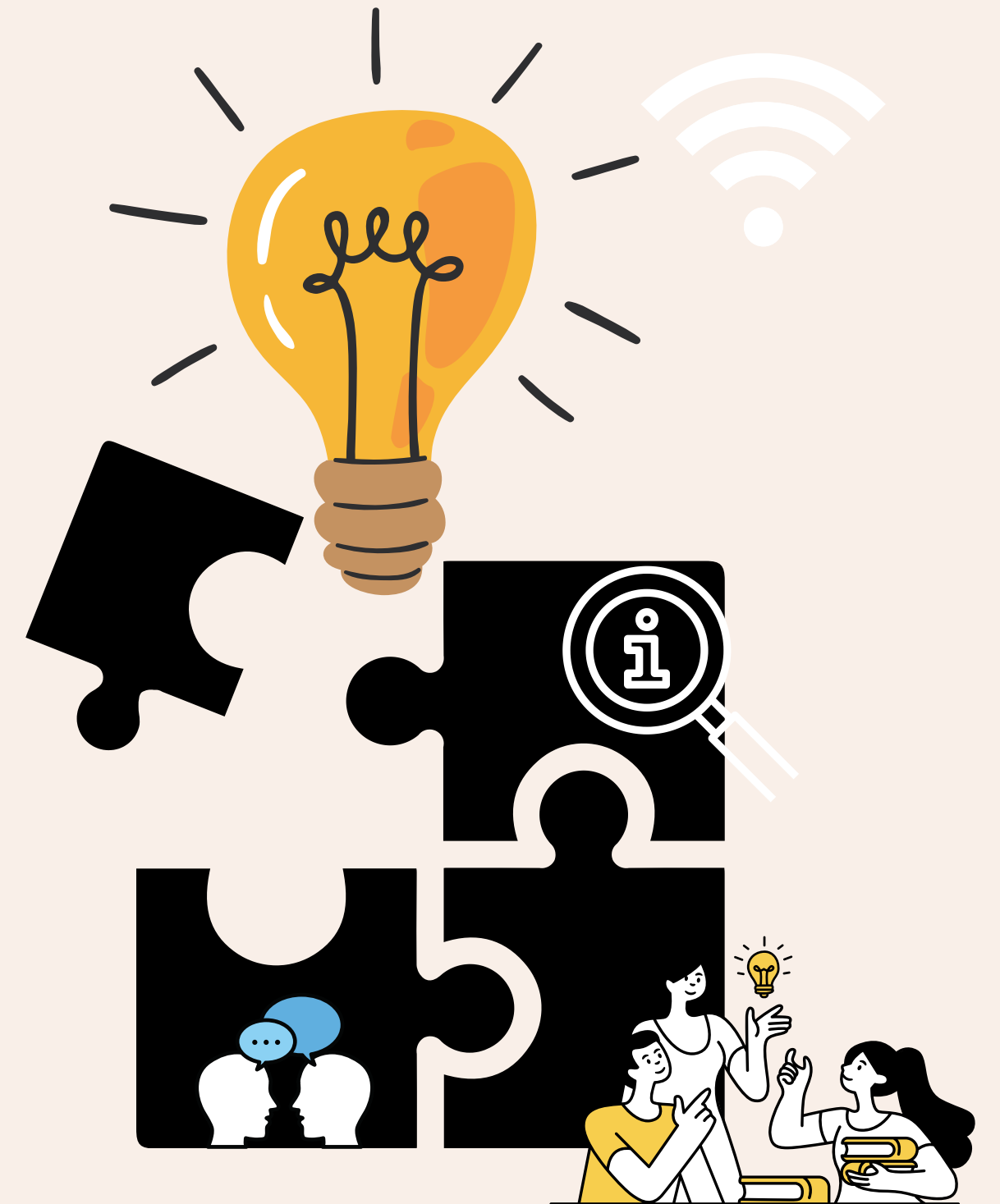
<b>Table of Contents</b>	<b>2</b>
<b>Mission Statement</b>	<b>3</b>
<b>Library Impact - Circulation</b>	<b>4</b>
<b>Library Impact - It's all about the patrons</b>	<b>5</b>
<b>Groups Served</b>	<b>6</b>
<b>Library Funding</b>	<b>7</b>
<b>The Team</b>	<b>8</b>
<b>Contact us</b>	<b>9</b>
<b>Thank you &amp; Sources</b>	<b>10</b>



# MISSION STATEMENT

'THE MISSION OF THE RICHARDS MEMORIAL LIBRARY IS TO SERVE AS AN EDUCATIONAL AND RECREATIONAL COMMUNITY RESOURCE. WE STRIVE TO ENRICH LIVES, BUILD COMMUNITY, AND GROW KNOWLEDGE BY BRINGING PEOPLE, INFORMATION, AND IDEAS TOGETHER.'

- RICHARDS MEMORIAL LIBRARY BOARD OF TRUSTEES.



# Library Impact

Reading is on Trend!

"This place is a gem" - Bob C.

★ FY22 - 39,411 items circulated  
print and digital

★ First Half of FY23

- 15,056 physical items circulated
- 3,623 digital books and electronic ebooks circulated

Sources: CWMars, Overdrive



"There is a wonderful selection of books" - Ellen"

★ Most popular items checked out from our library:

- Hardcover Adult Fiction
- Children's Books
- DVDs

Source: CWMars



"What I love most about my library is the access to educational materials for all ages." - Michele

"I love the people, the vibe and the activities" - Jen

# Library Impact

It's all about the patrons!



- ★ 4,008 community members participated in programs in the first 6 months of FY23
- ★ 109 programs offered between July and December
- ★ 2,988 Patrons picked up holds at curbside

# GROUPS SERVED

**Babies, Toddlers :**  
**Storytime**  
**1,000 Books**  
**Before**  
**Kindergarten**  
**Early Literacy Kits**

**Senior Citizens**  
Senior Book Club  
Tech Help  
Historical Talks  
Senior Tax Work-off

**Adults**  
Spice Club/Tea  
Club  
Museum Passes  
Author Visits

**All Ages**  
References Services  
Computer & printer help  
All -Age programs  
Collection of books, DVDs,  
audiobooks, telescope  
Art Show

**RICHARDS  
MEMORIAL LIBRARY**

**Community Groups**  
Paxton Center School teachers  
& Classroom visits  
Girl Scouts  
Devereaux

**School-aged children:**  
LEGO Club  
After school programs  
STEM programs: Math  
Club, Hexbugs, Playful  
Engineers, Chess Club,  
Book Clubs  
STEM Kits  
Literacy Kits  
Author visits

**Young Adults (ages 12-17)**  
After school jobs  
Weekly volunteer  
opportunities  
Book Clubs

**Community Partnerships**  
Aldrich Astronomical Society  
Paxton Recreation  
Wachusett CFCE  
Turn Back Time

**Libraries and patrons**  
All residents of Paxton are  
eligible for a library card  
150+ CW Mars libraries  
All certified public libraries in  
Mass.

# RICHARDS MEMORIAL LIBRARY FUNDING

## Town of Paxton Budget

Staff  
Library materials Maintenance services, phone  
Office & building supplies

CWMars Network Fee

\*\*\*\*\*

Over the past 20 years, the library has received an average of 1.38% of the municipal budget annually (Source: Mass. Dept. of Revenue)

### CW Mars Network Fee covers

-Evergreen Circulation database, Circulation stats, reports

-Reciprocal lending with 158 libraries in the local network

-Charter.Spectrum Internet

-eContent checkouts on Overdrive

-Google Workspace for business with secure email and Network security

## State Aid

Annual, voluntary grant program administered by the MBLC that distributes local aid to libraries

### Contingent upon:

**Municipal Appropriation Requirement (MAR) - Municipal budget increase of 2.5% of the average of the prior three years' budgets**

Minimum hours requirement

Free library services

Librarian Certification by MBLC

**19.5% of total budget is for library materials**

### FY23 State Aid Expenditures include

**Old Sturbridge Village & Ecotarium passes**

**Slate roof repairs: \$1,297.39**

**Partial payment for boiler/tank replacement: \$24,042.67**



**No taxpayer dollars were used for these building repairs**

## Friends of the Richards Memorial Library

Non-profit, member funded organization

### Recent Programs:

Jeff Belanger Haunted New England Candlemaking, Soapmaking, Pastel Painting, Mini Art Show, Historic speakers, Nature Talks, Author visits, New England Botanic Garden Pass

### Future Programs:

Cider Making Program  
Book Fair  
Scholarship for Paxton Students

**Other Sources: Paxton Cultural Council for programs & Summer Reading Program**

## Limited Use Trust Funds

**Richards Memorial Library Trust - For building maintenance**

**Howland Trust (books only)**

### Boiler/Oil tank replacement FY23

E. Bigelow Trust - used balance of \$597.26

ATT/Lucent Trust - used balance of \$10,123.44

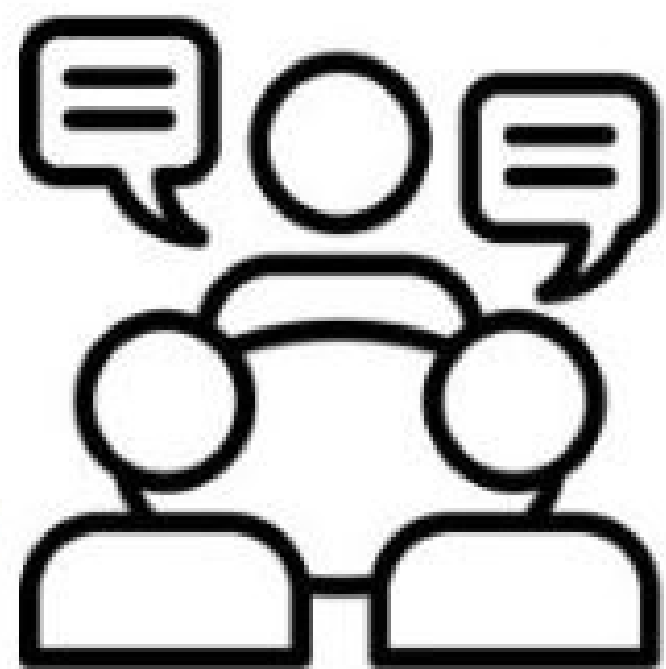
Donations - used balance of \$136.57

Also:

Library State Aid Grant - \$24,042.67

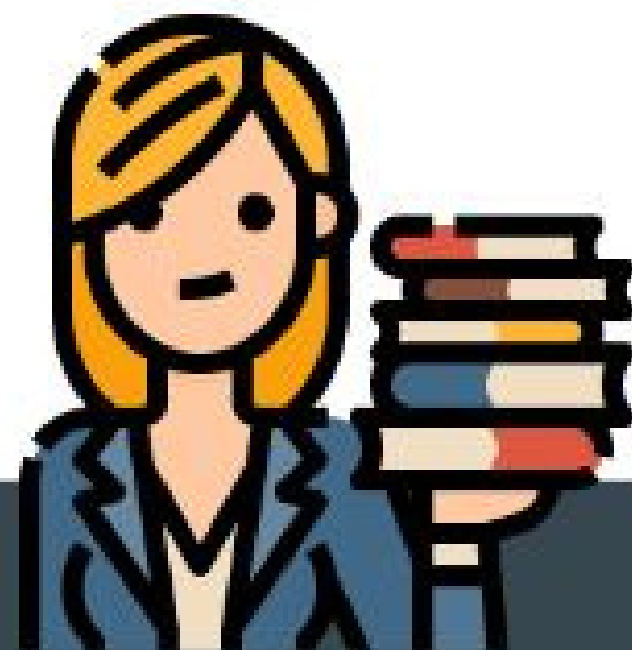
Richards Memorial Trust - \$12,000

# The Team



## Board of Library Trustees

An elected board of six Paxton residents charged with policy making, advocating for the library, and maintaining the library building



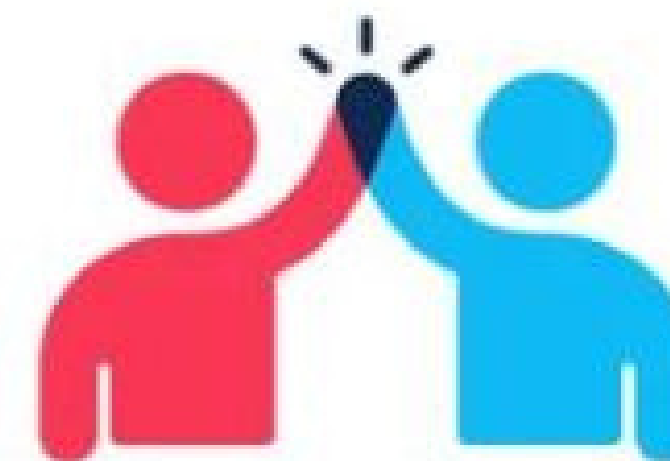
## Library Staff

The library employs two full-time staff members, 2 part-time circulation staff members, four teen pages, and a custodian



## Friends of the Library

The community supports the library through membership in the Friends of the Library



TeamWork

## Volunteers

We have a dedicated group of young adult volunteers from our community





# Contact Us



Richards Memorial Library

44 Richards Ave.

Paxton, MA 01612

(508) 754-0793

[richards@cwmars.org](mailto:richards@cwmars.org)

[www.rmlpaxton.org](http://www.rmlpaxton.org)



# Thank You

Static link

[https://www.canva.com/design/DAFaA2cq554/hpzV2UKPRohtBpsrOS\\_M5w/view?utm\\_content=DAFaA2cq554&utm\\_campaign=designshare&utm\\_medium=link2&utm\\_source=sharebutton](https://www.canva.com/design/DAFaA2cq554/hpzV2UKPRohtBpsrOS_M5w/view?utm_content=DAFaA2cq554&utm_campaign=designshare&utm_medium=link2&utm_source=sharebutton)

## Sources

### **CWMars ARIS & State Aid Statistics**

<http://www.cwmars.org> (staff site)

<https://docs.google.com/spreadsheets/d/1pz18e-uLeJDrJUk7NEnsFMeQpUbiB7QsCdd2t3mkOec/edit?usp=sharing>

### **Division of Local Services, MA Department of Revenue**

[https://dlsgateway.dor.state.ma.us/reports/rdPage.aspx?rdReport=ScheduleA.GF\\_LibraryExpendituresV2](https://dlsgateway.dor.state.ma.us/reports/rdPage.aspx?rdReport=ScheduleA.GF_LibraryExpendituresV2)

### **Massachusetts Board of Library Commissioners**

<https://mblc.state.ma.us/programs-and-support/library-statistics>

### **State Aid**

<https://mblc.state.ma.us/programs-and-support/state-aid-and-aris/index.php>