



**Prepared For:**  
**AT&T Mobility**  
**Site Name:**  
**Paxton, MA ~ MA4388**  
**Site Address:**  
**196 West Street**  
**Paxton, MA 01612**

**Prepared By:**  
**Caron & Associates Design**  
**Benjamin E. Caron**  
**301 Concord Street**  
**Haverhill, MA 01830**  
**(978) 360-3671**  
**ben@cadsim.com**




**General Information:**

Photographs were taken during the crane test on Sunday 3/09/2014  
Top of proposed monopole shown = 138' AGL per drawings provided  
Weather conditions were clear and sunny skies with light winds.

For visual reference only. Actual visibility is dependent upon weather conditions, season, sunlight, and viewer location.  
Based upon Rev1 Const. Dwgs by Dewberry dated: 1/02/2014

**Paxton, MA ~ MA4388 ~ (3/18/2014)**  
**Photographic Renderings**

Created By: Benjamin E. Caron  
 Caron & Associates Design  
(978) 360-3671 info@cadsim.com



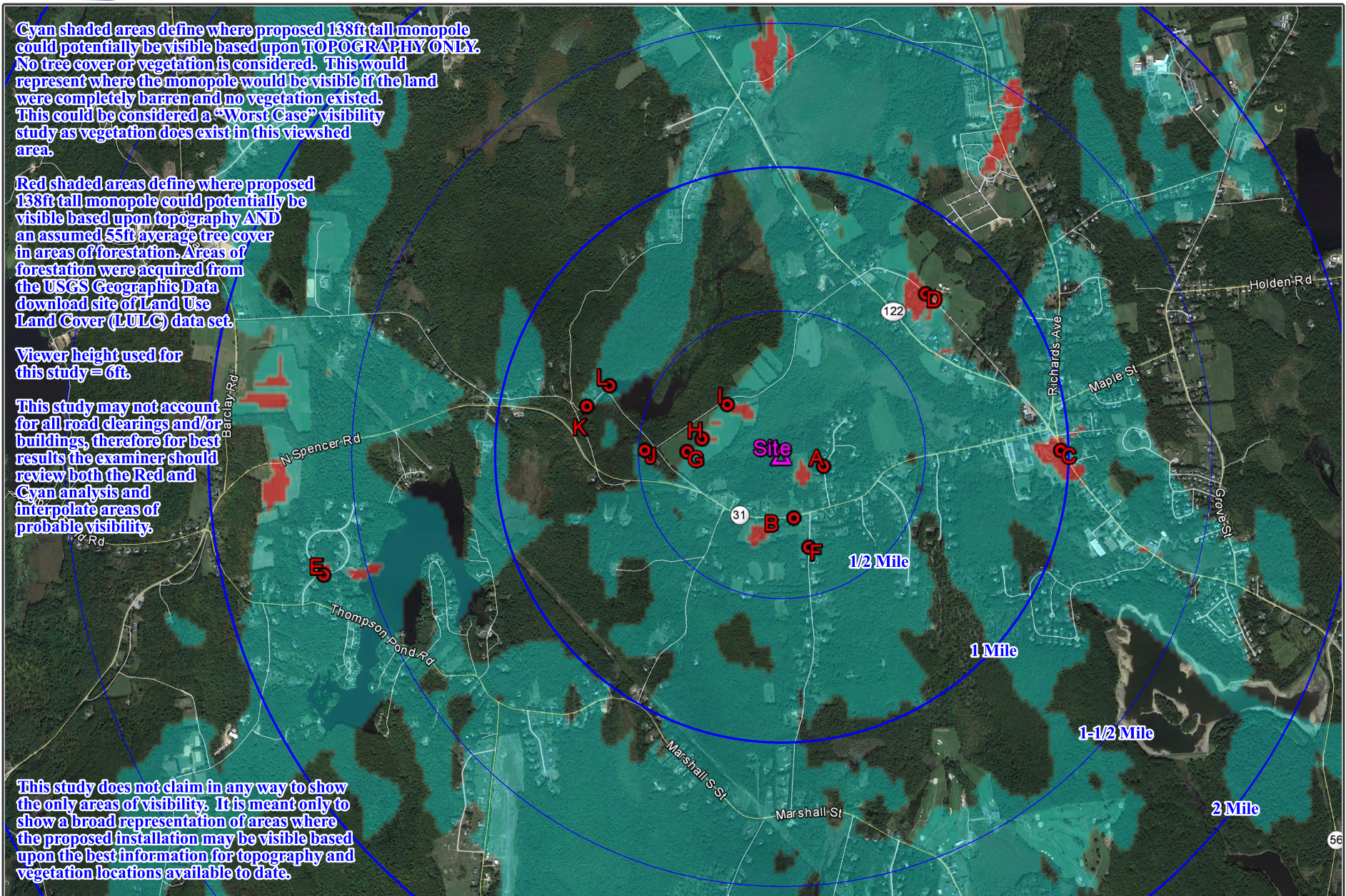
Cyan shaded areas define where proposed 138ft tall monopole could potentially be visible based upon TOPOGRAPHY ONLY. No tree cover or vegetation is considered. This would represent where the monopole would be visible if the land were completely barren and no vegetation existed. This could be considered a "Worst Case" visibility study as vegetation does exist in this viewshed area.

Red shaded areas define where proposed 138ft tall monopole could potentially be visible based upon topography AND an assumed 55ft average tree cover in areas of forestation. Areas of forestation were acquired from the USGS Geographic Data download site of Land Use Land Cover (LULC) data set.

Viewer height used for this study = 6ft.

This study may not account for all road clearings and/or buildings, therefore for best results the examiner should review both the Red and Cyan analysis and interpolate areas of probable visibility.

This study does not claim in any way to show the only areas of visibility. It is meant only to show a broad representation of areas where the proposed installation may be visible based upon the best information for topography and vegetation locations available to date.



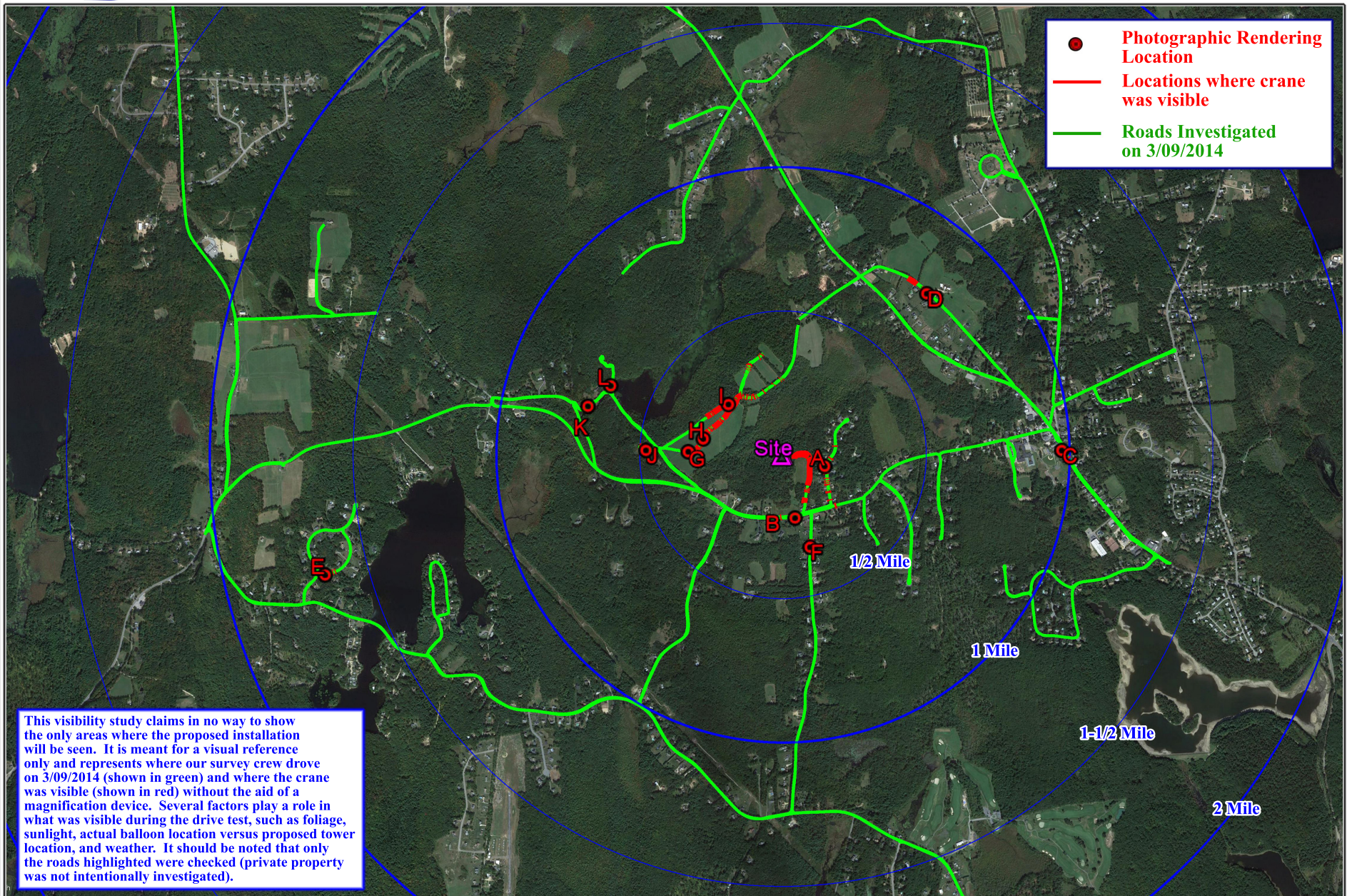
For visual reference only. Actual visibility is dependent upon weather conditions, season, sunlight, and viewer location.

Based upon Rev1 Const. Dwgs  
by Dewberry dated: 1/02/2014

**Paxton, MA ~ MA4388 ~ (3/18/2014)**  
Predictive Viewshed Mapping based upon terrain  
with and without tree cover - (all photo locations)

Created By: Benjamin E. Caron  
**CAD** Caron & Associates Design  
(978) 360-3671 info@cadsim.com





For visual reference only. Actual visibility is dependent upon weather conditions, season, sunlight, and viewer location.

Based upon Rev1 Const. Dwgs  
by Dewberry dated: 1/02/2014

**Paxton, MA ~ MA4388 ~ (3/18/2014)**  
**Driven/Verified Visibility Map**  
**(all photo locations)**

Created By: Benjamin E. Caron  
**CAD** Caron & Associates Design  
(978) 360-3671 [info@cadsim.com](mailto:info@cadsim.com)





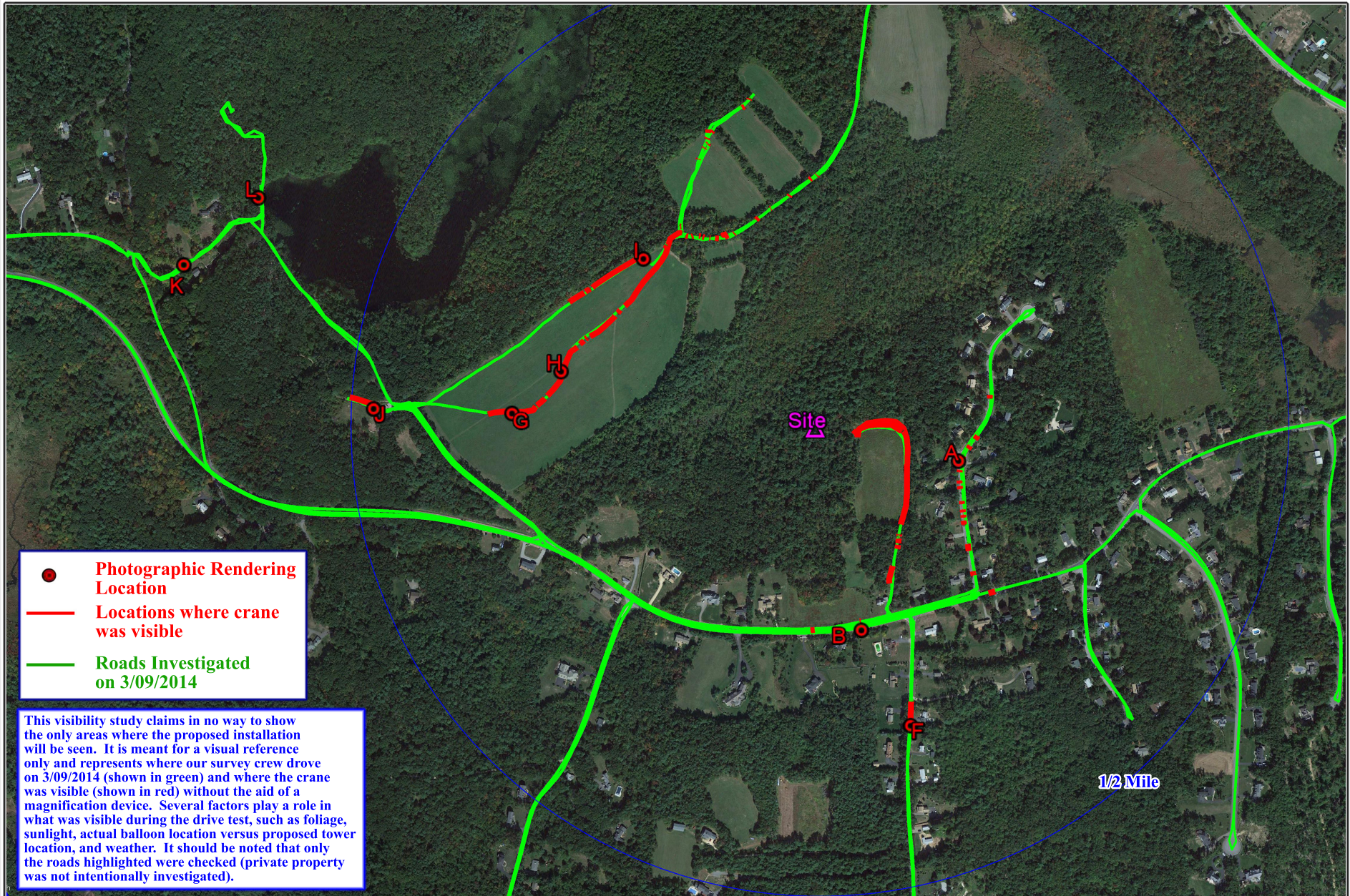
For visual reference only. Actual visibility is dependent upon weather conditions, season, sunlight, and viewer location.

Based upon Rev1 Const. Dwgs  
by Dewberry dated: 1/02/2014

**Paxton, MA ~ MA4388 ~ (3/18/2014)**  
Predictive Viewshed Mapping based upon terrain  
with and without tree cover - (photo locations close to site)

Created By: Benjamin E. Caron  
**CAD** Caron & Associates Design  
(978) 360-3671 info@cadsim.com





For visual reference only. Actual visibility is dependent upon weather conditions, season, sunlight, and viewer location.

Based upon Rev1 Const. Dwgs  
by Dewberry dated: 1/02/2014

**Paxton, MA ~ MA4388 ~ (3/18/2014)**  
Driven/Verified Visibility Map  
(photo locations close to site)

Created By: Benjamin E. Caron  
**CAD** Caron & Associates Design  
(978) 360-3671 [info@cadsim.com](mailto:info@cadsim.com)






**Existing  
Conditions**



For visual reference only. Actual visibility is dependent upon weather conditions, season, sunlight, and viewer location.  
Based upon Rev1 Const. Dwgs  
by Dewberry dated: 1/02/2014

**Paxton, MA ~ MA4388 ~ (3/18/2014)**  
Photo Location A ~ 50mm ~ 827' +/- (0.16mi) Away  
From near #19 Keep Avenue

Created By: Benjamin E. Caron  
 Caron & Associates Design  
(978) 360-3671 [info@cadsim.com](mailto:info@cadsim.com)





For visual reference only. Actual visibility is dependent upon weather conditions, season, sunlight, and viewer location.

Based upon Rev1 Const. Dwgs  
by Dewberry dated: 1/02/2014

**Paxton, MA ~ MA4388 ~ (3/18/2014)**  
Photo Location A ~ 50mm ~ 827' +/- (0.16mi) Away  
From near #19 Keep Avenue

Created By: Benjamin E. Caron  
**CAD** Caron & Associates Design  
(978) 360-3671 info@cadsim.com





For visual reference only. Actual visibility is dependent upon weather conditions, season, sunlight, and viewer location.  
Based upon Rev1 Const. Dwgs by Dewberry dated: 1/02/2014

**Paxton, MA ~ MA4388 ~ (3/18/2014)**  
Photo Location B ~ 65mm ~ 1161' +/- (0.22mi) Away  
From near Speed Limit Sign (Across the Road)

Created By: Benjamin E. Caron  
**CAD** Caron & Associates Design  
(978) 360-3671 [info@cadsim.com](mailto:info@cadsim.com)





For visual reference only. Actual visibility is dependent upon weather conditions, season, sunlight, and viewer location.  
Based upon Rev1 Const. Dwgs by Dewberry dated: 1/02/2014

**Paxton, MA ~ MA4388 ~ (3/18/2014)**  
Photo Location B ~ 65mm ~ 1161' +/- (0.22mi) Away  
From near Speed Limit Sign (Across the Road)

Created By: Benjamin E. Caron  
**CAD** Caron & Associates Design  
(978) 360-3671 [info@cadsim.com](mailto:info@cadsim.com)





For visual reference only. Actual visibility is dependent upon weather conditions, season, sunlight, and viewer location.

Based upon Rev1 Const. Dwgs  
by Dewberry dated: 1/02/2014

**Paxton, MA ~ MA4388 ~ (3/18/2014)**  
Photo Location C ~ 85mm ~ 5176' +/- (0.98mi) Away  
From near Paxton Pizza House (Do Not Pass Sign)

Created By: Benjamin E. Caron  
**CAD** Caron & Associates Design  
(978) 360-3671 [info@cadsim.com](mailto:info@cadsim.com)





For visual reference only. Actual visibility is dependent upon weather conditions, season, sunlight, and viewer location.  
Based upon Rev1 Const. Dwgs by Dewberry dated: 1/02/2014

**Paxton, MA ~ MA4388 ~ (3/18/2014)**  
Photo Location C ~ 85mm ~ 5176' +/- (0.98mi) Away  
From near Paxton Pizza House (Do Not Pass Sign)

Created By: Benjamin E. Caron  
**CD** Caron & Associates Design  
(978) 360-3671 [info@cadsim.com](mailto:info@cadsim.com)





For visual reference only. Actual visibility is dependent upon weather conditions, season, sunlight, and viewer location.

Based upon Rev1 Const. Dwgs  
by Dewberry dated: 1/02/2014

**Paxton, MA ~ MA4388 ~ (3/18/2014)**  
Photo Location D ~ 85mm ~ 4018' +/- (0.76mi) Away  
From near #83 Davis Hill Road

Created By: Benjamin E. Caron  
**CARON & ASSOCIATES DESIGN**  
(978) 360-3671 [info@cadsim.com](mailto:info@cadsim.com)





For visual reference only. Actual visibility is dependent upon weather conditions, season, sunlight, and viewer location.

Based upon Rev1 Const. Dwgs  
by Dewberry dated: 1/02/2014

**Paxton, MA ~ MA4388 ~ (3/18/2014)**  
Photo Location D ~ 85mm ~ 4018' +/- (0.76mi) Away  
From near #83 Davis Hill Road

Created By: Benjamin E. Caron  
**CAD** Caron & Associates Design  
(978) 360-3671 info@cadsimms.com





For visual reference only. Actual visibility is dependent upon weather conditions, season, sunlight, and viewer location.

Based upon Rev1 Const. Dwgs  
by Dewberry dated: 1/02/2014

**Paxton, MA ~ MA4388 ~ (3/18/2014)**  
Photo Location E ~ 105mm ~ 8697' +/- (1.65mi) Away  
From near #2 Nottingham Circle

Created By: Benjamin E. Caron  
**CAD** Caron & Associates Design  
(978) 360-3671 info@cadsim.com





For visual reference only. Actual visibility is dependent upon weather conditions, season, sunlight, and viewer location.  
Based upon Rev1 Const. Dwgs by Dewberry dated: 1/02/2014

**Paxton, MA ~ MA4388 ~ (3/18/2014)**  
Photo Location E ~ 105mm ~ 8697' +/- (1.65mi) Away  
From near #2 Nottingham Circle

Created By: Benjamin E. Caron  
**CAD** Caron & Associates Design  
(978) 360-3671 info@cadsim.com





For visual reference only. Actual visibility is dependent upon weather conditions, season, sunlight, and viewer location.

Based upon Rev1 Const. Dwgs  
by Dewberry dated: 1/02/2014

**Paxton, MA ~ MA4388 ~ (3/18/2014)**  
Photo Location F ~ 65mm ~ 1752' +/- (0.33mi) Away  
From near #13 Suomi Street

Created By: Benjamin E. Caron  
**CAD** Caron & Associates Design  
(978) 360-3671 [info@cadsim.com](mailto:info@cadsim.com)





For visual reference only. Actual visibility is dependent upon weather conditions, season, sunlight, and viewer location.

Based upon Rev1 Const. Dwgs  
by Dewberry dated: 1/02/2014

**Paxton, MA ~ MA4388 ~ (3/18/2014)**  
Photo Location F ~ 65mm ~ 1752' +/- (0.33mi) Away  
From near #13 Suomi Street

Created By: Benjamin E. Caron  
**C&A** Caron & Associates Design  
(978) 360-3671 [info@cadsim.com](mailto:info@cadsim.com)






**Existing  
Conditions**



For visual reference only. Actual visibility is dependent upon weather conditions, season, sunlight, and viewer location.  
Based upon Rev1 Const. Dwgs by Dewberry dated: 1/02/2014

**Paxton, MA ~ MA4388 ~ (3/18/2014)**  
Photo Location G ~ 65mm ~ 1702' +/- (0.32mi) Away  
From lower portion of Davis Hill Field

Created By: Benjamin E. Caron  
 Caron & Associates Design  
(978) 360-3671 [info@cadsim.com](mailto:info@cadsim.com)





For visual reference only. Actual visibility is dependent upon weather conditions, season, sunlight, and viewer location.  
Based upon Rev1 Const. Dwgs by Dewberry dated: 1/02/2014

**Paxton, MA ~ MA4388 ~ (3/18/2014)**  
Photo Location G ~ 65mm ~ 1702' +/- (0.32mi) Away  
From lower portion of Davis Hill Field

Created By: Benjamin E. Caron  
**CAD** Caron & Associates Design  
(978) 360-3671 [info@cadsim.com](mailto:info@cadsim.com)






**Existing  
Conditions**

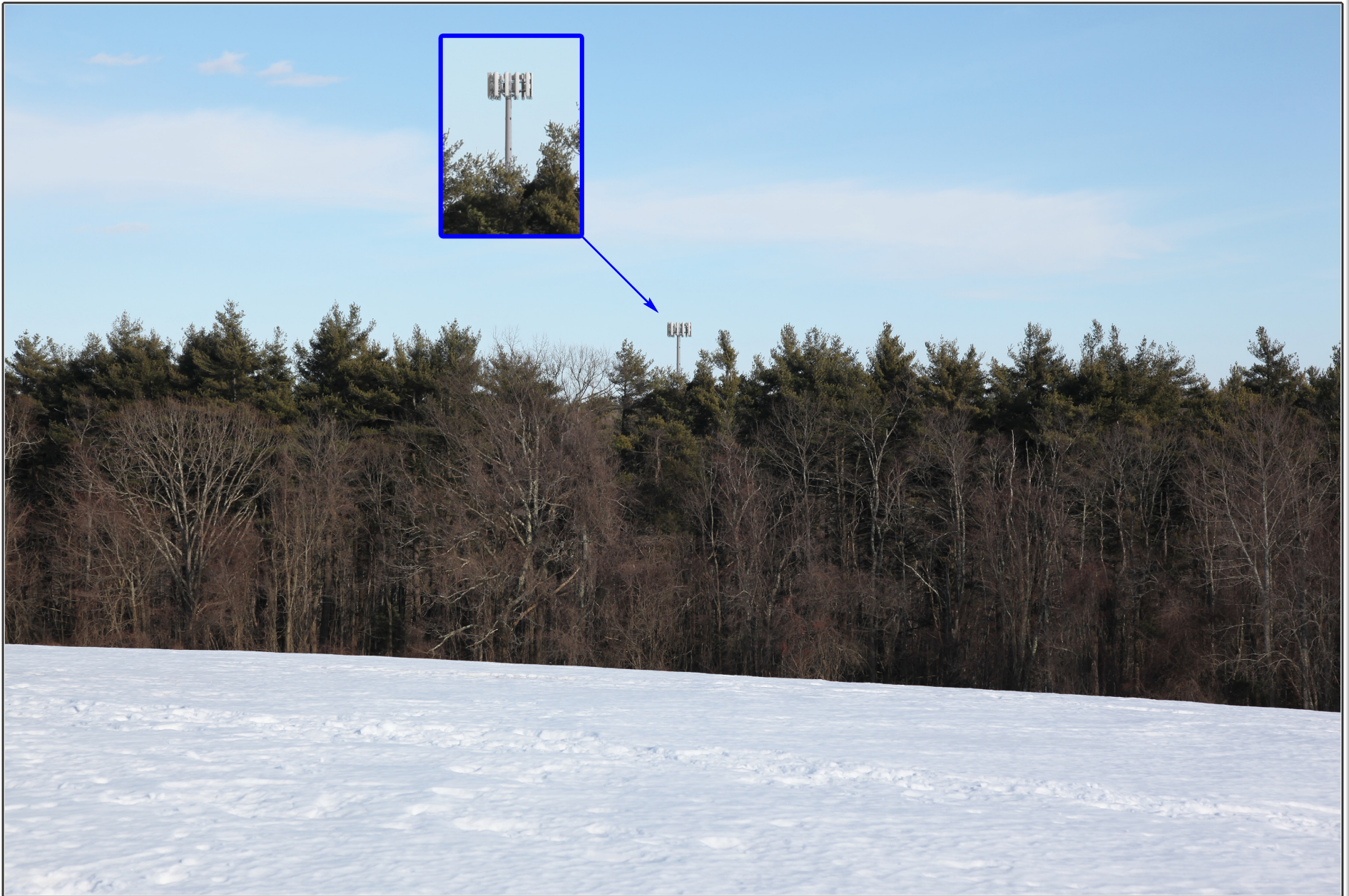


For visual reference only. Actual visibility is dependent upon weather conditions, season, sunlight, and viewer location.  
Based upon Rev1 Const. Dwgs by Dewberry dated: 1/02/2014

**Paxton, MA ~ MA4388 ~ (3/18/2014)**  
Photo Location H ~ 65mm ~ 1461' +/- (0.28mi) Away  
From Center of Davis Hill Field

Created By: Benjamin E. Caron  
 Caron & Associates Design  
(978) 360-3671 [info@cadsim.com](mailto:info@cadsim.com)





For visual reference only. Actual visibility is dependent upon weather conditions, season, sunlight, and viewer location.  
Based upon Rev1 Const. Dwgs by Dewberry dated: 1/02/2014

**Paxton, MA ~ MA4388 ~ (3/18/2014)**  
Photo Location H ~ 65mm ~ 1461' +/- (0.28mi) Away  
From Center of Davis Hill Field


Created By: Benjamin E. Caron  
**CAD** Caron & Associates Design  
(978) 360-3671 info@cadsim.com





For visual reference only. Actual visibility is dependent upon weather conditions, season, sunlight, and viewer location.  
Based upon Rev1 Const. Dwgs by Dewberry dated: 1/02/2014

**Paxton, MA ~ MA4388 ~ (3/18/2014)**  
Photo Location I ~ 65mm ~ 1349' +/- (0.26mi) Away  
From north end of large Davis Hill Field

Created By: Benjamin E. Caron  
 Caron & Associates Design  
(978) 360-3671 [info@cadsim.com](mailto:info@cadsim.com)





For visual reference only. Actual visibility is dependent upon weather conditions, season, sunlight, and viewer location.  
Based upon Rev1 Const. Dwgs by Dewberry dated: 1/02/2014

**Paxton, MA ~ MA4388 ~ (3/18/2014)**  
Photo Location I ~ 65mm ~ 1349' +/- (0.26mi) Away  
From north end of large Davis Hill Field

Created By: Benjamin E. Caron  
**CAD** Caron & Associates Design  
(978) 360-3671 info@cadsim.com





For visual reference only. Actual visibility is dependent upon weather conditions, season, sunlight, and viewer location.  
Based upon Rev1 Const. Dwgs by Dewberry dated: 1/02/2014

**Paxton, MA ~ MA4388 ~ (3/18/2014)**  
Photo Location J ~ 85mm ~ 2486' +/- (0.47mi) Away  
From Davis Road Parking Lot near Restroom

Created By: Benjamin E. Caron  
**CAD** Caron & Associates Design  
(978) 360-3671 [info@cadsim.com](mailto:info@cadsim.com)





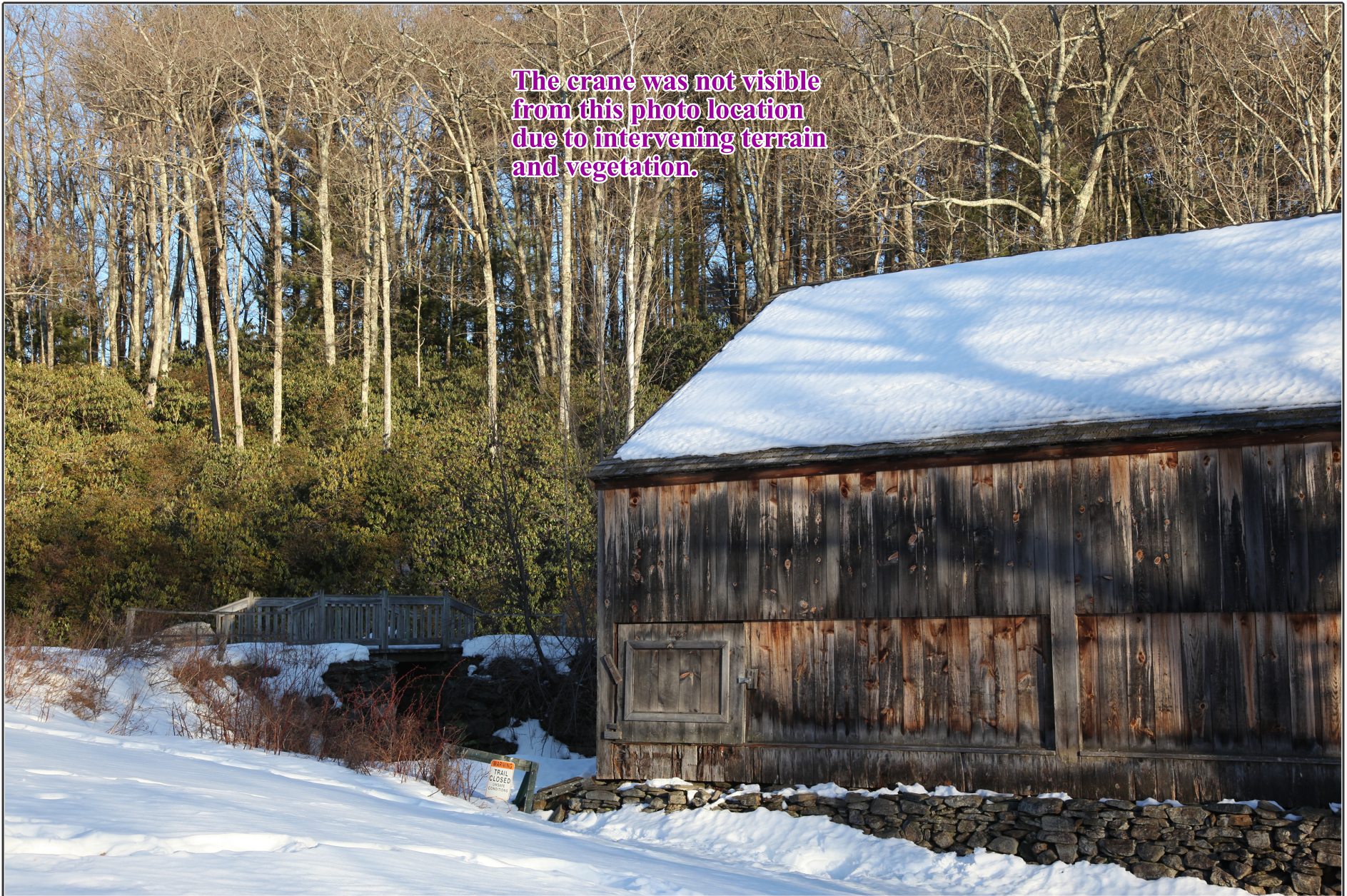
For visual reference only. Actual visibility is dependent upon weather conditions, season, sunlight, and viewer location.

Based upon Rev1 Const. Dwgs  
by Dewberry dated: 1/02/2014

**Paxton, MA ~ MA4388 ~ (3/18/2014)**  
Photo Location J ~ 85mm ~ 2486' +/- (0.47mi) Away  
From Davis Road Parking Lot near Restroom

Created By: Benjamin E. Caron  
**CAD** Caron & Associates Design  
(978) 360-3671 [info@cadsim.com](mailto:info@cadsim.com)





**The crane was not visible  
from this photo location  
due to intervening terrain  
and vegetation.**

For visual reference only. Actual visibility is dependent upon weather conditions, season, sunlight, and viewer location.  
Based upon Rev1 Const. Dwgs  
by Dewberry dated: 1/02/2014

**Paxton, MA ~ MA4388 ~ (3/18/2014)**  
Photo Location K ~ 50mm ~ 3689' +/- (0.70mi) Away  
From in front of "The Old Sawmill"

Created By: Benjamin E. Caron  
**CAD** Caron & Associates Design  
(978) 360-3671 [info@cadsim.com](mailto:info@cadsim.com)




**The crane was not visible  
from this photo location  
due to intervening terrain  
and vegetation.**



For visual reference only. Actual visibility is dependent upon weather conditions, season, sunlight, and viewer location.  
Based upon Rev1 Const. Dwgs  
by Dewberry dated: 1/02/2014

**Paxton, MA ~ MA4388 ~ (3/18/2014)**  
Photo Location L ~ 50mm ~ 3390' +/- (0.64mi) Away  
From in front of "Enchanta Bridge"

Created By: Benjamin E. Caron  
 Caron & Associates Design  
(978) 360-3671 [info@cadsim.com](mailto:info@cadsim.com)